

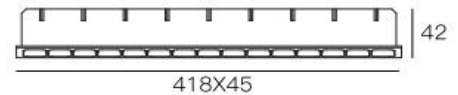
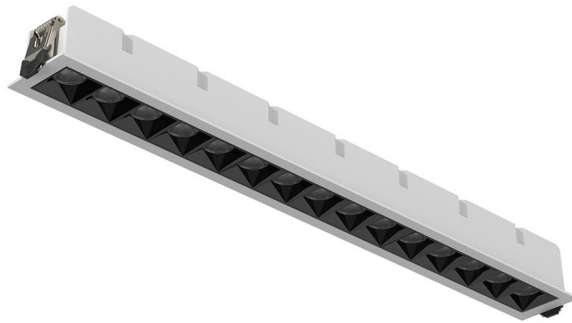
Recessed Led Linear Grille Downlight

LED Laser Blade Light 30w

Model No.:SL-SD35530

Version: V1.0

Date: June 8th,2022



408*35

Features

- Optic Lens Output Oval Distribution , Especially Suitable For Lighting Long And Narrow Spaces, Such As Corridors Or Passage Areas,And Kitchen Island Or Dinning Table .
- Aluminum Housing With Excellent Thermal Dissipation.Sand White Or Sand Black Finish.
- Glareless, Exquisite And Dexterous Design Ensure Highly Integrated In Installation Space.
- Ra90 High Color Rendering Is More Realistic, Restores The True Color Of The Subject.
- Provided 5/10/15 Grille Eyes With Wattage From 10W To 30W.
- Anit Glare Round Or Square Reflector No Dazzling Lighting,Protect Eyes.
- Adjustable Type,Frameless Type And Surface Mounted Type Available For Choose.
- Supporting To Triac Dimming, 0/1-10V And Dali Dimming Smart Control System .
- 3-5 Years warranty.

Application Scenarios

Widely Used In Commercial Lighting Like Hotels, Villas, Offices, And Residential Lighting,Etc.Specially Suitable For Corridors Or Passage Areas.

Luminaire Specification

Height	H 42mm
Wide	W 45mm
Length	L 418mm
Material	Aluminium+PC
IP Rating	IP20
Cutout	Ø 408*35mm

LED Specification

LED	SMD Bridgelux
Output	30W
CRI	Ra90
CCT	2700K, 3000K,4000K,5000K
Lumen	2400lm
Beam angle	15° / 24° / 36°
Drive current	DC600mA,36V~50V
Input voltage	AC220~240V / 50-60Hz
Finish	Sand White / Sand Black

Ordering Information

Beam angle	LED driver brand	LED CCT	Driver type	Power
1 Narrow 15°	1 Lifud	1 2700K	1 Triac dimming	A 30W
2 Medium 24°	2 Kegu	2 3000K	2 0-10V Dimming	
3 Wide 36°	3 Eaglerise	3 4000K	3 DALI Dimming	
		4 5000K	4 Regular Non-dimming	